


MARCH 2023

Volume 15 • Issue 3

A publication for the members of

POSTALFamily
 Credit Union, Inc.

www.URmyCU.org

"Welcome to the Family"



Important Notice

March 30th 95th Annual Meeting

The 2023 Annual Meeting is just around the corner, and we hope you can join us. Unlike other financial institutions whose meetings are restricted to a few shareholders, your credit union is a financial cooperative with annual meetings open to its valued member-owners: You! Give us your feedback and let us know how well the credit union is serving your financial needs. Enjoy refreshments and snacks and the chance to visit with other members too. The credit union exists only to serve you and your support is appreciated.

The meeting will be held on Thursday, March 30, 2023, at the main office at 1243 W. 8th Street in the lower level. The meeting will begin at 5:15 p.m. We look forward to seeing you at the annual meeting.

Only one nomination was received for each of the open Board of Directors positions. As a result, no election will be necessary and the three individuals will be elected by general consent or acclamation for a three year term.

The elected directors are: Tom Crowley, Bill Nolan, and Kim Jansen.

CAR RATE Extravaganza!

FOR A LIMITED TIME ONLY

Buy a new car or a car new to you!

Have a car loan somewhere else at a higher rate? Then "Bring your Loan Home" and start saving money each month with PFCU. Call Jeff or Erin today at 513.381.8600 and press "3", we'll do all the work for you, our member!

*Annual Percentage Rate, subject to credit approval.



Electronic Tax Document Info

PFCU mails tax documents out prior to January 31, 2023 to any member who has not signed up to receive those documents electronically on our home banking site by December 27, 2022.

If you signed up late then you will receive paper tax documents for 2022 and electronic tax documents in years to come.



Tax Time Again!

Tax Day is Tuesday, April 18, 2023

You must submit your 2022 tax forms electronically or have them post-marked by Tuesday, April 18, 2023. But even if you wait until the last moment to file your taxes, there are three things you can do right now to lessen the stress.



1. Get a set of folders or large envelopes and label them for your various tax documents. As you receive tax information from your employer, the Credit Union and any other financial institutions, any investments you hold and so on, place them in the appropriate folder.
2. Make a folder for possible tax deductions as well. Go through your year's receipts and pull out those related to real estate taxes, charitable donations, medical expenses, etc., and place them in the folder. Dig out your 2021 return to help you remember what you claimed previously.
3. If you are eligible, contribute to your Individual Retirement Account. You have until tax day to do so, but the sooner the better. Because the interest is accumulating tax free, you will want to maximize the time you have your money tucked away for retirement. For complete details, contact your tax advisor.



Video Scholarship

The Ohio Credit Union Foundation is offering Ohio undergraduate credit union members the opportunity to apply for one of three scholarships by creating an interactive 1 to 2-minute video answering the following scholarship question:

"Show us how you envision the credit union of the future."

Video entries can be edgy, funny, bold, simple, serious – or anything in between. Entries will be judged on the accuracy of information presented, effectiveness in addressing the scholarship question, and originality.

The Video Scholarship began on Wednesday, Feb. 1, 2023, and ends Friday, April 28, 2023. All video entries must be submitted by Friday, April 28, 2023, at 11:59:59 p.m. EDT.

ELIGIBILITY:

Applicants must be a member of an Ohio-based credit union who is in good standing and currently attends or has been accepted to attend an accredited college or university, in pursuit of an undergraduate degree, may apply. Proof of acceptance/enrollment will need to be submitted upon request.

Hours and Information



Mailing Address:

P.O. Box 14403
Cincinnati, OH 45250-0403

Hours:

Monday, Tuesday, Thursday, Friday: 9:00 a.m. to 5:00 p.m.
Wednesday: 10:00 a.m. to 5:00 p.m.

Cincinnati: 1243 West 8th Street, Cincinnati, OH 45203

Tel: 513-381-8600, Toll Free: 1-800-265-4527, Fax: 513-345-8726

Dayton: 1111 East Fifth Street, Dayton OH 45401

Tel: 937-228-7691, Toll Free: 1-800-265-4527

Closed 11:00 a.m. to 11:30 a.m. for Lunch

Personal Account Line:

Call P.A.L. for all your account information. If you are in area codes 513, 812 or 859 call 632-5693... all other area codes call 1-800-621-9722. Or visit WebPal II at www.urmycu.org



By member choice accounts are insured by ASI for up to \$250,000. This institution is not federally insured, and if the institution fails, the Federal Government does not guarantee that depositors will get back their money. **MEMBERS ACCOUNTS ARE NOT INSURED OR GUARANTEED BY ANY GOVERNMENT OR GOVERNMENT-SPONSORED AGENCY.**

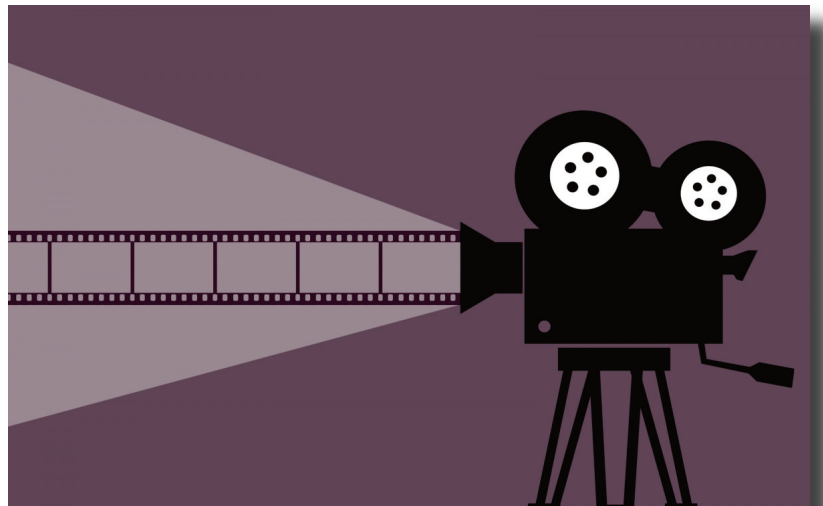
We will be closed...

Memorial Day, Monday, May 30, 2023

Dates to remember...

Annual Meeting, Thursday, March 30, 2023

U.S. Tax Day, Tuesday, April 18, 2023





KEEP AN EYE ON THE CARDS IN YOUR WALLET WITH THE PHONE IN YOUR POCKET.



With the CardValet® app, you can save time and gain peace of mind knowing you can control the cards in your wallet with the phone in your pocket. If you can't find your credit card, you can instantly lock the card to prevent fraudulent charges from being made. Don't worry; you can also instantly unlock the card when it turns up in the dryer or refrigerator. (No judgment.) With CardValet you can also set

spending limits, get purchase alerts in real time and limit transactions to a certain area using your phone's GPS, all while having the ability to personalize your own security settings to suit your busy lifestyle. With convenience like that we may see less of you here in the branch, but we'll still be here if you need us. We'll miss you, so stop by once in a while even if it's just to say "hi."

CardValet®

It's free, fast - easy to use

L!FE HAPPENS

Insurance is Important!

Postal Family Credit Union's Trusted Insurance Partner is TruStage Insurance Agency.

Andrew VanSickle, a regional Liberty Mutual agent licensed in Ohio, Kentucky and Indiana and a Downtown Cincinnati Resident is PFCU's recommended resource to have all your questions answered and to make sure you have the necessary coverages to protect you when "Life Happens". Give Andrew a call for a 100% free, no obligation conversation on how to protect you and your family when "Life Happens". Andrew can be reached at 513-364-7178.

No Surcharge ATM's

You can always find the ATM's closest to you that have no surcharges by visiting the following links:

<https://www.allianceone.coop/a1atm/find>



<https://www.moneypass.com/atm-locator.html>

You may search by address, city, or zip. Great to use while traveling on vacation or business!





Approved!



**“Bring your loan
HOME”**

Receive a \$100 Gas Card!*
Defer your payments for 90 days!
We will match or beat your rate!*

**Transfer an existing loan or credit card balance from
another institution and bring your loan HOME?**

How can you say no?
Stop in or call
513.381.8600 Ext. #3



POSTALFamily
Credit Union, Inc.

1243 West 8th Street • Cincinnati, OH 45203-1004 • 513-381-8600
1111 East Fifth Street • Dayton, OH 45402-2299 • 937-228-7691
Mail: P.O. Box 14403 • Cincinnati, OH 45250-0403
Toll Free 1-800-265-4527 • www.URmyCU.org

*Balance must be at least \$10,000 or greater to qualify. For loan balances below \$10,000 only the 90 day deferment will be offered. Member must qualify for the loan under normal underwriting guidelines. Minimum rate floor of this offer is 3.89% APR. Interest will accrue over the 90 day deferment period regardless of balance. Member must be able to provide verification of existing rate. Existing PFCU loans are excluded. This institution is not federally insured. MEMBERS' ACCOUNTS ARE NOT INSURED OR GUARANTEED BY ANY GOVERNMENT OR GOVERNMENT-SPONSORED AGENCY.